

## Why do you need GPR on roofs?

The Southeast has experienced phenomenal growth over the past few years. With this growth has come an ever-increasing demand for office space renovation which can require new HVAC installation, plumbing, conduit, or scaffolding anchors. Structural components such as rebar, post tension, and conduit occasionally need to be located before cutting concrete structures to help prevent costly or hazardous damage.

### Benefits of GPR:

**SAFE:** Can be used around people and electronic devices without causing harm. Our equipment is FCC approved.

**Timely:** Scans can be completed during normal business hours.

**Cost-effective:** Radar evaluation reduces the chances of damaging structural components.

**Convenient:** Our equipment is self-contained. Access to only one side of the roof is required for scanning. We can scan from either above or below the roof.



1825 Lockeway Dr., Ste. 206, Alpharetta, GA 30004

A BETTER SOLUTION TO ROOF EVALUATION IS NOW AVAILABLE.



PROVIDING RADAR  
LOCATION OF STEEL IN  
CONCRETE STRUCTURES  
THROUGHOUT THE  
SOUTHEAST



1825 Lockeway Dr., Ste. 206

Alpharetta, GA 30004

Phone: 770-569-1111

Cell: 678-548-6432

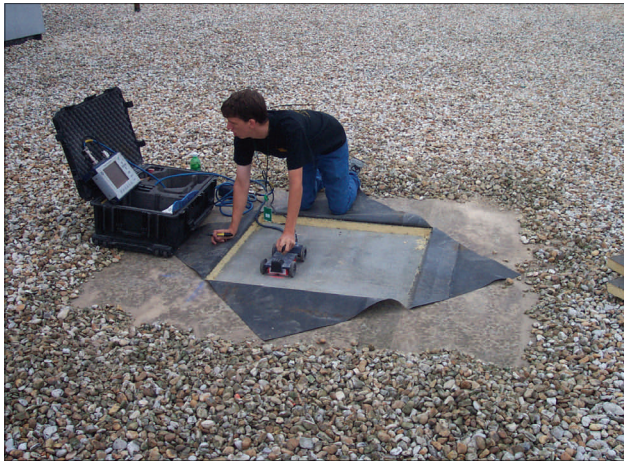
Fax: 678-623-0449

[www.xenogenesis.biz](http://www.xenogenesis.biz)

## WE HAVE THE SOLUTION TO YOUR PROBLEMS WITH ROOF CORING, CUTTING, AND EVALUATION.

Our firm specializes in locating the components contained within concrete roofing through the use of a ground penetrating RADAR system (GPR) specifically designed for evaluating concrete structures with none of the problems associated with traditional concrete x-ray.

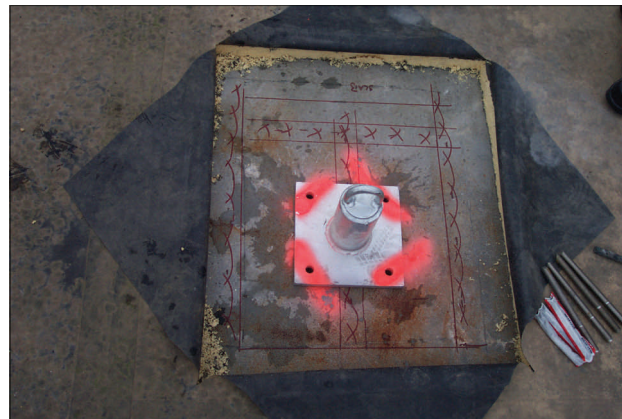
Ground Penetrating Radar is a non-destructive evaluation technique used to accurately determine the precise location of potential hazards contained within the concrete.



Making a Radar survey on the roof; note the 3' x 3' exposed area required for the survey.

### What we can detect:      What we can evaluate:

- |   |  |
|---|--|
| <ul style="list-style-type: none"><li>• Rebar</li><li>• Post Tension Cables</li><li>• Conduit (Galvanized and PVC)</li><li>• Presence of mortar (grout)</li></ul> | <ul style="list-style-type: none"><li>• Concrete Walls</li><li>• Elevated Slabs</li><li>• Structural Walls</li><li>• Slabs-on-Grade</li><li>• Concrete Roofs</li></ul> |
|---|--|



A successfully installed scaffolding anchor.

### Why Xenogenesis, LLC?

Xenogenesis, LLC has been working throughout the Southeast, with offices in the Atlanta, Georgia and Huntsville, Alabama areas. We have performed our RADAR services on a wide variety of projects throughout the Southeast with great success. In the Atlanta area we have made slab x-ray almost obsolete with our safer, more accurate service.

### What we have to offer:

- Prompt response to job requests throughout the Southeast.
- Rates typically lower than those of the local x-ray firms.
- Friendly and knowledgeable technicians
- Free quotes and demonstrations
- We guarantee that if we arrive at your site and we cannot find a suitable area to place your core we will not charge for our service.

We take great pride in our reputation and would like an opportunity to demonstrate what we can do for your firm.

If your firm would like a free quote on the cost of our service feel free to call

**(770) 569-1111**

or email us at

**[proposals@xenogenesis.biz](mailto:proposals@xenogenesis.biz)**

To learn more about our firm please visit our website at

**[www.xenogenesis.biz](http://www.xenogenesis.biz)**

