

**DOES YOUR FIRM EVER  
ENCOUNTER ANY OF THESE  
PROBLEMS?**

- **LIMITED RECORDS OF BURIED UTILITIES AND/OR UTILITIES NOT BURIED WHERE MAPPED.**
- **BORE HOLE OR TRENCH DAMAGES WHAT YOU ARE TRYING TO AVOID OR LOCATE.**
- **REGULATORY AGENCIES REQUIRE PROOF OF TANK PRESENCE/REMOVAL.**
- **HAVING TO RELOCATE CEMETERIES THAT HAVE MISSING MARKERS, INCOMPLETE RECORDS, OR UNKNOWN BOUNDARIES.**
- **NEED TO COMPLY WITH STATE AND FEDERAL HISTORIC PRESERVATION AND CULTURAL RESOURCE MANAGEMENT GUIDELINES.**
- **NEED TO KNOW DEPTH TO BOTTOM AND SEDIMENT THICKNESS IN PONDS.**
- **CONCERNS ABOUT SINKHOLE FORMATION.**
- **CONCERNS ABOUT SHALLOW WATER TABLE OR CONTAMINANT PRESENCE.**

**NOW YOUR FIRM HAS AN  
OPTION**



1825 Lockeway Dr., Ste. 206, Alpharetta, GA 30004

**WE HAVE THE SOLUTION TO YOUR UNDERGROUND PROBLEMS.**



**PROVIDING GROUND  
PENETRATING RADAR  
SERVICES THROUGHOUT THE  
SOUTHEAST**



**1825 Lockeway Dr, Ste. 206  
Alpharetta, GA 30004  
Phone: 770-569-1111  
Cell: 678-548-6432  
Fax: 678-623-0449  
[www.xenogenesis.biz](http://www.xenogenesis.biz)**

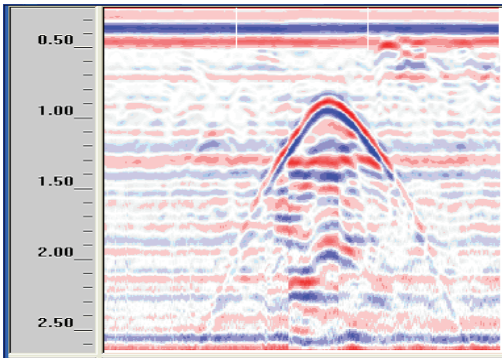
# WE HAVE THE SOLUTION TO YOUR PROBLEMS.

Our firm specializes in locating shallow subsurface features and targets in archeological, geological, and construction settings through the use of a ground penetrating RADAR system (GPR).

Ground Penetrating Radar is a non-destructive evaluation technique used to accurately determine the precise location of features and potential hazards in the shallow subsurface.

## What we can Detect:

- Buried utilities, storm water lines, and tanks
- Cultural/archaeological features, such as walls, roads, and foundations .
- Gravesites
- Shallow stratigraphy/bedrock/water table
- Voids and sinkholes
- Contaminant tracing and saltwater incursion
- Slab-on-grade conditions and inclusions

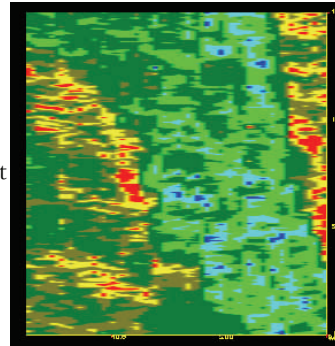


Radargram of a buried gas tank.

## Why does your firm need GPR?

The Southeast has experienced phenomenal growth over the past few years, necessitating increased construction and repair of office buildings, housing, and infrastructure. Buried utilities, tanks, and other targets occasionally need to be located prior to excavation to help prevent costly damage. With GPR these targets can be located and marked with greater accuracy, in rapid time and with no disturbance.

Radargram of a septic system seep zone (bright green area)



## Benefits of GPR:

- **SAFE:** Can be used around people and electronic devices without causing harm. Our equipment is FCC approved.
- **Non-destructive:** Does not require any ground disturbance or boring.
- **Timely:** Many targets can be evaluated on site.
- **Cost-effective:** Reduced chances of costly repairs or downtime.
- **Convenient :** Scans can be completed during normal business hours. All of our equipment is self-contained and highly portable.

## Why Xenogenesis, LLC?

Xenogenesis, LLC has been working throughout the Southeast, with offices in the Atlanta, Georgia and Huntsville, Alabama areas. We have performed our RADAR services on a wide variety of projects throughout the Southeast with great success.

## What we have to offer:

- Prompt response to job requests throughout the Southeast.
- Friendly and knowledgeable technicians.
- Free quotes and demonstrations.
- We guarantee that if we arrive at your site and we cannot obtain a usable signal we will not charge for our service.

We take great pride in our reputation and would like an opportunity to demonstrate what we can do for your firm.

If your firm would like a free quote on the cost of our service feel free to call

**(770) 569-1111**

or email us at

**proposals@xenogenesis.biz**

To learn more about our firm please visit our website at

**www.xenogenesis.biz**

